

CPCD 120

轻型12吨内燃叉车
Light Type 12t
Internal Combustion Forklift Truck



HELI
中国合力 提升未来



CPCD 120

轻型12吨内燃叉车

Light Type 12t Internal Combustion Forklift Truck

© 170322 设计印刷 合力服务 heli copyright



安徽合力股份有限公司
ANHUI HELI CO., LTD.

地址: 合肥市经开区方兴大道668号
咨询电话: 0551-63689111
融资租赁: 0551-63689365
传真: 0551-63689365
网址: <http://www.helichina.com>
邮箱: sale@helichina.com

ADD: NO.668 Fangxing Street, Economical Development Zone, Hefei, P.R. China
TEL: (86 551) 63639068 (America) 63639258 (Europe) 63639358 (Asia)
63662105 (Africa & Middle East) 63639530 (Warehouse Equipment)
63639531 (Wheel loader)

FAX: (86551) 63639966
WEBSITE: <http://www.helichina.com>
Email: heli@helichina.net



A. 强劲动力 powerful

Cummins QSB4.5柴油发动机

- ▶ 国三/欧III A排放, 排量4.5L
- ▶ 电子油门
- ▶ 油耗低, 噪音低, 动力输出平稳

Cummins QSB4.5 electric control diesel engine

- ▶ China III/Europe III, 4.5L
- ▶ Electronic oil throttle
- ▶ Low oil consumption, low noise, stable power output



锡柴CA6DF3电控柴油发动机

- ▶ 国III排放, 排量7.127L
- ▶ 电子油门
- ▶ 发动机总线仪表, 信息实时显示

Xichai CA6DF3 electric control diesel engine

- ▶ China III, 7.127L
- ▶ Electronic oil throttle
- ▶ Engine bus instrument to show real-time information



液力换向变速箱+340高性能变矩器

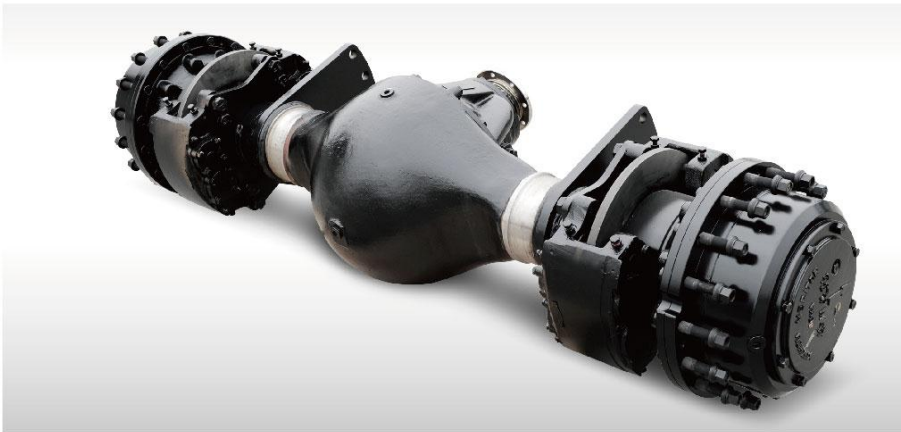
- ▶ 手自一体智能换挡技术
- ▶ 换挡平顺无冲击
- ▶ 智能换挡更便捷
- ▶ 动力匹配更高效
- ▶ 安全可靠噪音低

Hydraulic powered direction changing transmission box+ 340 high performance torque converter

- ▶ Tiptronic intelligent gear shifting technology
- ▶ Smooth gear shifting without shock
- ▶ Easy gear shifting
- ▶ High efficient power matching
- ▶ Safe and reliable; low noise



B. 安全可靠 Safe and reliable

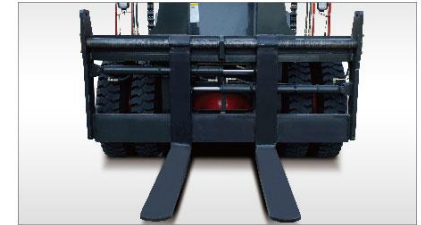


- ▶ 美驰叉车专用重载驱动桥
- ▶ 双曲线型、合资技术
- ▶ 能够提供驱动桥所需的扭矩
- ▶ Heavy loaded drive axle for forklift truck
- ▶ Hyperbolic-type, joint venture technology
- ▶ Supply necessary torque for drive axle

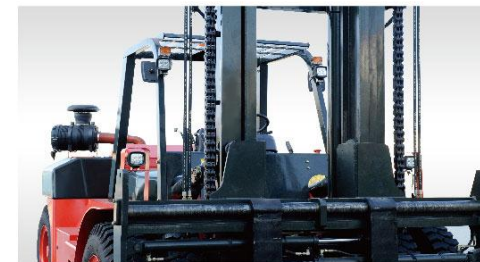


- ▶ 大口径导风通道
- ▶ 保证车辆散热效果
- ▶ Air flow channel with large diameter
- ▶ Ensure good cooling effect

- ▶ 高强度结构钢货叉架，具有优良的耐用性。
- ▶ 货叉架宽度较窄于车辆整车宽度，可在狭窄空间作业
- ▶ Fork bracket with high strength structural steel has good durability
- ▶ The fork bracket is narrower than completed truck and the truck can work in narrow space.



- ▶ 大脚踏板和把手
- ▶ 左右脚制动距离一致，更安全更可靠
- ▶ 敞开式台阶为进出车辆提供便捷和安全
- ▶ 四组LED前照大灯，保证工作照明
- ▶ 开阔的全方位视野
- ▶ Wide on-off pedal and large handle
- ▶ Left and right brake distances are the same and the truck is safer and more reliable.
- ▶ Open type step is easy and safe for getting on and off truck.
- ▶ Four groups of LED front lamp ensure working lighting.
- ▶ Wide 360° view





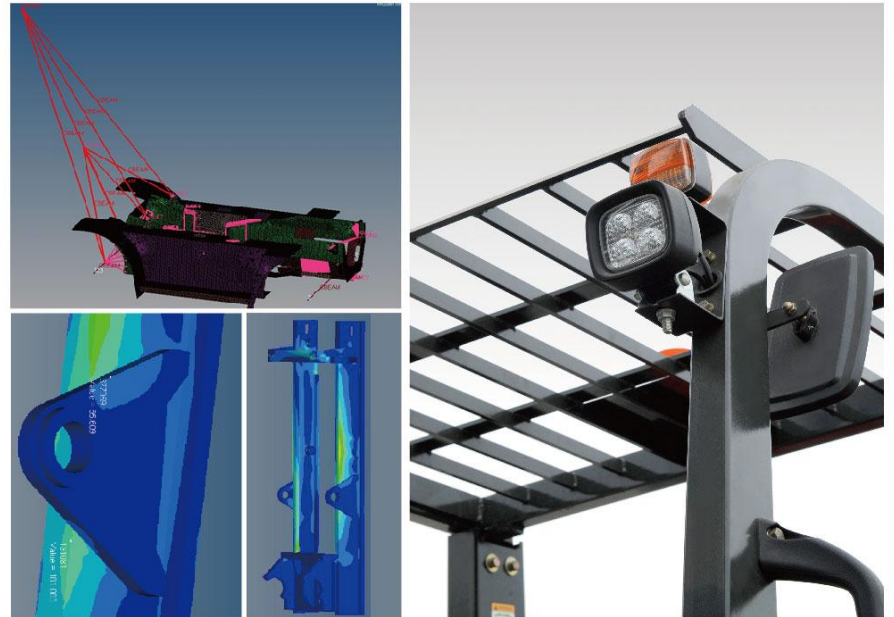
C. 舒适性 Travelling comfort

- ▶ 宽视野门架
- ▶ 操作阀杆符合人机工程
- ▶ 双气压制动踏板，操作更省力
- ▶ Door frame is wide field
- ▶ Operating stem with ergonomic
- ▶ Dual air brake pedal, the operation is more labor-saving



D. 节能降耗 Energy saving and consumption reducing

- ▶ 轻量化设计，减少整车自重，降低能耗
- ▶ 整车配置LED灯具，寿命长，可靠耐用，低保养成本，低功耗，高亮度，低热量，节能环保
- ▶ Light type design to reduce truck service weight and energy consumption
- ▶ The truck is assembled with LED light which has long service life, low cost, low consumption, high light, low heat and is reliable, durable and energy saving.

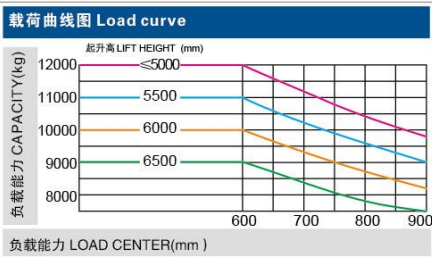
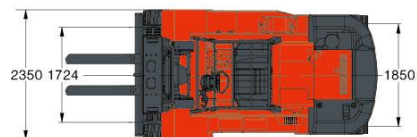
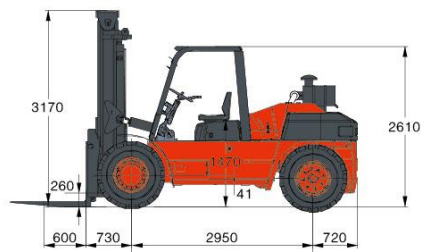


E. 维护保养 Maintenance and service

- ▶ 便于检测的电控系统
- ▶ 空气滤清器易于清洗和更换
- ▶ 具有自锁式结构的可自动开启式气弹簧
- ▶ 敞开式发动机机罩，保证快速高效的维护
- ▶ Easy maintained electric control system
- ▶ The air cleaner is easy for clean and change
- ▶ Automatic open type gas spring with self-lock structure
- ▶ Open-type engine hood ensures fast and high efficient maintenance.



特性		Characteristic		
1.01	制造商	Manufacturer	HELI	
1.02	型号	Model	CPCD120-Wx-06III	CPCD120-CU-06III
1.03	起升重量	Load Capacity	kg	12000
1.04	载荷中心	Load Centre	mm	600
1.05	动力方式	Power Type	柴油	
1.06	驾驶方式	Driving Style	座式	
轮胎		Tire		
2.01	前轮	Front Tire	10.00-20	
2.02	后轮	Rear Tire	10.00-20	
尺寸参数		Dimension Parameter		
3.01	标准起升高度	Lifting Height(standard)	mm	3000
3.02	门架倾角(前/后)	Mast Tilt(fwd/bwd)	6° / 12°	
3.03	最小转弯半径	Min.Turning Radius	mm	4300
3.04	全长(含货叉)	Overall Length(with Forks)	mm	4400(5770)
3.05	全宽	Overall Width	mm	2350
3.06	全高(门架不升起)	mast without activity	mm	3170
3.07	轴距	Wheel Base	mm	2950
3.08	轮距 前/后	Tread(fwd/bwd)	mm	1724/1850
3.09	悬距 前/后	Overhang(fwd/bwd)	mm	730/720
3.10	最小离地间隙	Min.Under clearance	mm	260
3.11	货叉调距范围	Lateral Fork Adjustment(Outside of Forks)	mm	420-2200
3.12	货叉长度	Fork Length	mm	1370
3.13	货叉宽度/厚度	Fork Width/Thickness	mm	175/80
性能参数		Performance Parameter		
4.01	起升速度(满载)	Lifting Speed(Loaded)	mm/s	350
4.02	下降速度(满载)	Lowing Speed(Loaded)	mm/s	370
4.03	行驶速度(满载/空载)	Traveling Speed(Loaded/Unloaded)	km/h	27/29 25/27
4.04	最大爬坡度	Max.gradeability	%	28 25
发动机		Engine		
5.01	发动机制造厂商/型号	Engine Manufacturer/Model	潍柴CA6DF3-16GAG3U-HL10	康明斯CumminsQSB4.5
5.02	缸数/排量	Cyl. Number/Displacement	/L	6/7.127 4/4.5
5.03	额定功率/转速	Rated Power/Roted Speed	kW/rpm	118/2200 119/2200
5.04	最大扭矩/转速	Max. Torque/Roted Speed	Nm/rpm	640/1300~1700 624/1500
变速箱		Gearbox		
6.01	变速箱	Gearbox	合力专用变速箱 special gearbox for HELI	



注：
载荷中心是从货叉正面计算起，标准载荷中心的基点是指负荷边长为1200mm的立方体中心位置。当门架前倾、使用非标准货叉或装载超过正常宽度的负荷时，将会承载量减少。通过负荷曲线图，能及时地了解各种载荷中心时的承载能力。

Note:
Load center is measured from the fork front. A standard load center point refers to the center of a cubic of side length of 1200mm. When gantry tilts forward, the bearing capacity will reduce in case of use of non-standard fork or loading a load exceeding the normal width. Load curve tells you bearing capacity of various load centers in time.

标准配置 Standard Configuration

宽视野门架	Wide view mast	液压油液位计	Hydraulic oil level gauge
标准货叉	Standard fork	四片多路阀	Four-piece control valve
转向指示灯	Steering indicator	倾斜油路自锁阀	Tilt self-lock valve
倒车镜	Back-up mirror	起升油路限速阀	Flow regulator of lifting oil circuit
前组合灯	Front combination lamp	全液压动力转向	Fully-hydraulic powered steering
计时表	Stopwatch	液压回路滤油器	Oil filter of hydraulic oil loop
警示灯	Warning light	拉索式停车制动	Cable-type parking brake
倒车蜂鸣器	Reversing buzzer	标准座椅	Standard seat
倒车灯	Back-up lamp	花纹耐用轮胎	Durable tire with decorative pattern
液压调距叉	Hydraulic fork positioner	倾斜可调转向管柱	Tilt and adjustable steering column
电喇叭	Electric horn	牵引销	Traction pin
发动机油压报警	Engine oil pressure alarm	进气装置	Air inlet device
充电指示	Charging indicator	随车工具	Driver's tool
发动机水温表	Water temperature meter of engine		
空挡指示	Neutral indicator		
电液换向	Electro-hydraulic changing-over		
机械式空滤器堵塞报警	Mechanical type air filter obstruction alarm		
护顶架	Overhead guard		

选用装置和附件 Optional Devices and Accessories

整体驾驶室	Integrated type cab	整机自润滑系统	Self lubricating system
二级空滤(盆式粗空滤)	Two-stage air cleaner (basin type coarse air cleaner)	实心胎	Solid tyre
串杆	Carpet boom	倒车雷达及影像	Backward radar and image
侧移器	Side shifter	空调、暖风机	Air conditioner, heater
火花捕捉器	Spark catcher	OPS行走控制系统	OPS travelling control system
托架式侧移调距叉	Carrier type side shifting fork positioner	自动灭火装置	Automatic fire fighting device

- 合力产品不断更新和改进中，合力保留在没有事先告知用户的情况下，更改整体参数及设计的权利。
- 文中插图不一定是该机型的标准款，插图中产品配置和外观颜色与实际机型存在差异，以实物为准。

- Our products are constantly updated and improved. Parameters and design are subject to change without prior notice.
- The configuration and color of the products in figures may be different from the actual delivered model. Please in kind prevails.